

Cetacean Mortality Related to Ship Traffic in the Mexican Central Pacific

Camila Lazcano-Pacheco,¹ Mario A. Onofre-Díaz,² Raziel Meza-Yañez,³
Myriam Llamas-González,⁴ Luis M. Bautista-Moreno,⁵ Aramis Olivos-Ortiz,³
and Christian D. Ortega-Ortiz³

¹Centro Universitario de Ciencias Biológicas y Agropecuarias, Universidad de Guadalajara, Jalisco, México

²Universidad Autónoma Agraria Antonio Narro, Torreón, Coahuila, México

³Facultad de Ciencias Marinas, Universidad de Colima, Manzanillo, Colima, México

E-mail: christian_ortega@ucol.mx

⁴Centro Universitario de la Costa Sur, Universidad de Guadalajara, San Patricio-Melaque, Jalisco, México

⁵Instituto Oceanográfico del Pacífico, Sexta Región Naval, Secretaría de Marina, Manzanillo, Colima, México

Ship traffic can negatively affect marine wildlife, including cetaceans, especially in areas where these mammals carry out relevant ecological activities (Halliday et al., 2022). Specifically, ship strikes can be caused by several types of large vessels (e.g., cargo, tankers, cruise ships, and fishing boats), as well as by smaller recreational boats (~10 m). Cetacean mortality caused by ship strikes has been documented on stranded carcasses collected from beaches or the bow of a vessel upon arrival at a port (Laist et al., 2001; Jensen et al., 2004; Silber et al., 2010; Schoeman et al., 2020; Ransome et al., 2021). Sometimes, the impact may leave no external evidence and cause of death must be confirmed via necropsy (Laist et al., 2001; Panigada et al., 2006); however, the carcass must be fresh since an advanced state of decomposition masks the signs of a ship strike (Glass et al., 2009).

Cetacean mortality related to ship traffic is increasing since the co-occurrence of cetaceans and ships is becoming more widespread (Guzmán et al., 2013; Redfern et al., 2013; Thomas et al., 2016), which is likely due to increased ship traffic worldwide and the recovery of certain cetacean populations (e.g., *Eschrichtius robustus*, *Megaptera novaeangliae*, and *Balaenoptera musculus* from the Northeast Pacific; Calambokidis & Barlow, 2004; Punt & Wade, 2012).

The commercial port of Manzanillo is located in the Mexican Central Pacific (MCP) in the eastern tropical Pacific (Figure 1). It is the most important port in the country with ship traffic capacity over 2.1 million cargo containers or twenty-foot equivalent units (TEUs) annually (Secretaría de Comunicaciones y Transportes [SCT], 2014). In addition, two companies that store liquefied gas (Z Gas and KMS) are present in the southeast zone (Figure 1), and tourist and fishing activities are

also common in the region (Secretaría de Turismo [SECTUR], 2014). Therefore, the MCP presents high maritime traffic where three species of mysticetes and 11 odontocetes have been recorded (Ortega-Ortiz et al., 2013). As a result, the MCP is an area where interactions between cetaceans and vessels are frequent and mortality events can occur.

The aim of this paper is to report the mortality of six individual cetaceans in the MCP caused by interactions with ships (Table 1). Data were obtained from an indirect monitoring program that we have been conducting since 2010. In each stranding event, data such as date, time, site, animal decomposition state (i.e., alive, fresh, early decomposition, advanced decomposition, and mummified), species, size class, sex, and evidence of human interactions (e.g., wounds by ship strikes; Moore et al., 2013) were recorded (ACCOBAMS, n.d.).

Two Events Involving Humpback Whales

The first event on 10 March 2013 occurred when a sport fishing boat closely approached a humpback (*Megaptera novaeangliae*) mother–calf pair at the entrance of Manzanillo Bay, Colima (Figure 1). During the sighting, the calf was jumping and, due to its proximity, fell on the boat's deck. It broke the bow's hatch glass (Figure 2) and caused a laceration to its ventral area as it slid into the water. On 12 March, personnel of the Secretaría de Marina (SEMAR) sighted the carcass floating in the middle of Manzanillo Bay, which later stranded in Playa Azul, Manzanillo Bay, with moderate decomposition (Figure 1, blue circle 1). The calf was a male with trauma to the ventral area and a ~50 cm cut on the left side of its abdominal area (Figure 2).

The second event on 11 March 2022 involved a carcass in advanced decomposition observed

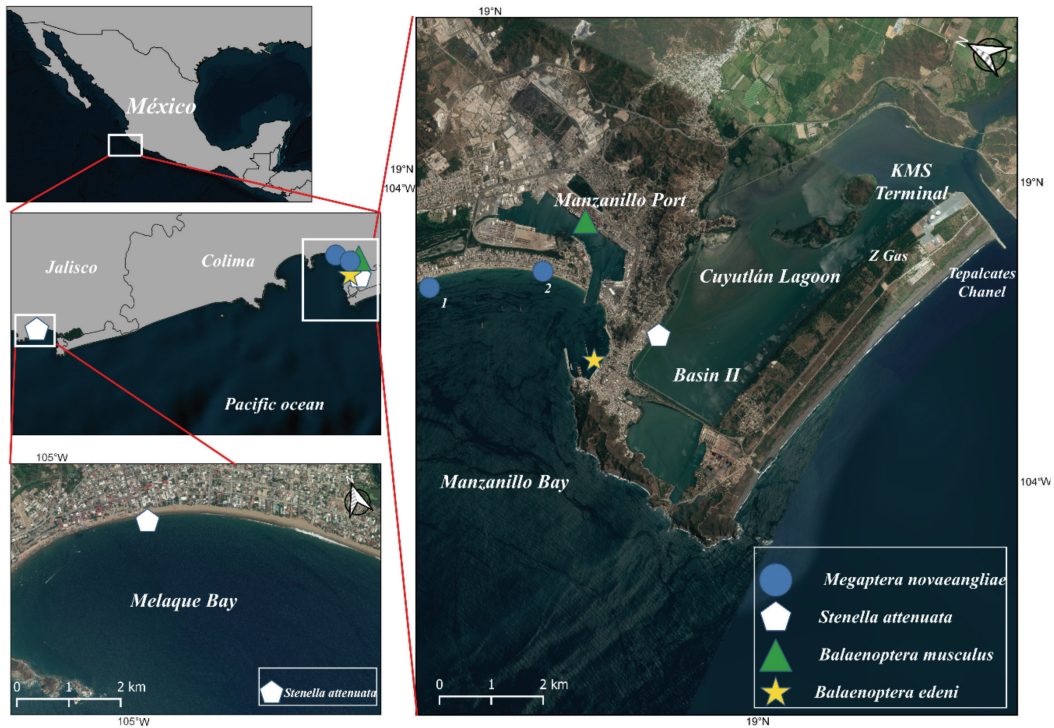


Figure 1. Locations of dead cetaceans related to ship strikes in the Mexican Central Pacific. In the map on the right, blue circle 1 indicates the humpback whale (*Megaptera novaeangliae*) calf stranding site of 12 March 2013, and blue circle 2 indicates the calf stranding site of 11 March 2022.

Table 1. Potential cetacean mortalities caused by ship strikes in the Mexican Central Pacific

Species	Event date	Location	Sex	Total length (m) and age class	Carcass decomposition state	Ship type
<i>Megaptera novaeangliae</i>	12 March 2013	-104.1926 W, 19.055 N	Male	4.7 calf	Moderate	Sport fishing boat
	11 March 2022	-104.3034 W, 19.0708 N	Female	4.6 calf	Advanced	Boat
<i>Stenella attenuata</i>	16 April 2013	-104.7051 W, 19.2222 N	Female	~1.47 subadult	Moderate	Boat
	13 March 2014	-104.3048 W, 19.0466 N	Female	2.05 adult	Fresh	Gas tanker vessel
<i>Balaenoptera musculus</i>	23 April 2019	-104.2917 W, 19.0679 N	Male	~16.0 juvenile	Fresh	Container vessel
<i>Balaenoptera edeni</i>	24 October 2021	-104.3140 W, 19.0553 N	Male	11.3 subadult	Advanced	Vessel



Figure 2. Humpback whale calf stranded at Playa Azul, Manzanillo, Colima, on 12 March 2013: (A) injuries sustained in the ventral and peduncle area during the incident are indicated with red circles; and (B) sport fishing boat with damages to the glass of the bow hatch due to the impact of the calf's body falling on it. (Photos taken by Christian D. Ortega-Ortiz, Universidad de Colima)

floating in front of Manzanillo Bay, Colima, which stranded the same day on Las Brisas Beach (Figure 1, blue circle 2). It was a female calf with propeller lacerations on the dorsal peduncle and ventral flukes (Figure 3). Based on their shape, size, and position (4 to 8 cm apart), these injuries could have been from a strike by a small boat with a four-stroke engine.

Humpback whales are distributed in several coastal regions during winter–spring, engaging in breeding activities of the Mexican Distinct Population Segment (Baker et al., 2013; Bettridge et al., 2015; Ortega-Ortiz et al., 2022). Therefore, this species (both adults and calves) has the highest number of interactions with boats. Calves may die due to injuries caused by small tourist boats (Ransome et al., 2021). Whale-watching activities in México have increased (Urbán & Vilorio-Gómora, 2021), even with a Mexican law (NOM-131-SEMARNAT-2010) that regulates this activity. However, few sites have certified companies, with most operating illegally. In addition, private non-tourist operators do not abide by the rules and speed limits. Currently, the Colima coasts are not

official whale-watching sites, but the Manzanillo Bays have been identified as important areas for mother–calf pairs during February and March (Meza-Yañez, 2022). Calves spend more time at the surface, are less visible due to their small body size, and are more susceptible to vessel interaction because of their curious nature (Glockner & Venus, 1983; Laist et al., 2001; Lammers et al., 2013). Thus, humpback calves in the MCP are affected by boat collisions and likely other anthropogenic activities (Valencia-González, 2014; Arroyo-Salazar, 2017; Llamas-González, 2019).

Two Events Involving Spotted Dolphins

The first mortality of a spotted dolphin (*Stenella attenuata*) occurred on 16 April 2013 at Melaque Beach, Jalisco (Figure 1). The female subadult carcass had moderate decomposition, and the following injuries were evident: two deep lacerations and an abrasion on the dorsal area proximal to the peduncle. One laceration was rhomboid-shaped with loss of a large section of skin and subdermal tissue as well as tearing of the outer muscle layers without clear



Figure 3. Humpback whale calf stranded at Las Brisas Beach, Manzanillo, Colima, on 11 March 2022: (A) injuries from the collision with the propeller of a small boat, with wounds on the peduncle; and (B) injuries in the ventral region of the flukes. (Photos taken by Raziel Meza-Yañez, Universidad de Colima)



Figure 4. Spotted dolphin (*Stenella attenuata*) individual stranded at Melaque Beach, Jalisco, on 16 April 2013; presence of lacerations in the dorsal area near the peduncle: rhomboidal wound with loss of skin and subdermal tissue, with tearing of the outer muscle layers (upper box), and diffuse subcutaneous hematoma ~3 cm deep with muscle tearing, potentially caused by a propeller incision (bottom box). (Photo taken by Christian D. Ortega-Ortiz, Universidad de Colima)

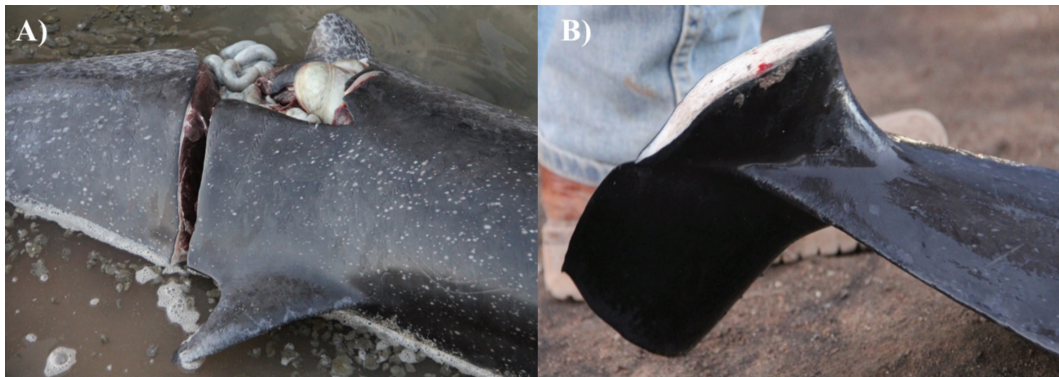


Figure 5. Spotted dolphin individual stranded at Basin II of Cuyutlán lagoon, Colima, on 13 March 2014. Injuries due to collision with a gas tanker vessel are shown in (A) left flank, with a clean cross-section and some organs extruding from the body; and (B) flukes, with wounds on both lobes. (Photos taken by Tadashi Kono Martínez, Universidad de Colima)

evidence of hematoma or inflamed wound edges. The second laceration was ~3 cm deep showing a diffuse subcutaneous hematoma with muscle tear. Cause was not identified, but the laceration might have been caused by a propeller (Figure 4).

The second event was an adult female that stranded inside the Cuyutlán lagoon, Colima (northwest of Basin II), on 13 March 2014 (Figure 1). The carcass was fresh and showed two large, deep transverse cuts in the middle of the body posterior to the dorsal fin, which exposed viscera and the vertebral column, as well as a mutilated fluke. The severity of the wounds was compatible with a large vessel propeller (Figure 5). The dolphin could have been struck by a vessel inside the lagoon or near the entrance of the Tepalcates channel. Coincidentally, the gas tanker *Sevilla* arrived at the KMS terminal at 0700 h that day. It is hypothesized that, based on the direction of the pattern of surface currents in the lagoon (SEMAR, 2013), the carcass was displaced into Basin II.

The spotted dolphin is the most dominant species in the area; its distribution is mainly associated with prey availability (Juárez-Ruiz, 2014; Kono-Martínez et al., 2017; Díaz-Torres et al., 2022). During winter coastal surveys, at least three sightings of spotted dolphin individuals in the Cuyutlán lagoon were recorded (20 March, 21 April, and 12 May 2016; unpub. data provided by Alejandro Reyes, Director of Environment of the Municipal Council of Manzanillo, Colima, México). This area might be a feeding ground for this dolphin species since there is a considerable abundance of fish in the lagoon in winter (Cabral-Solís, 2011). This explanation coincides with the high number of fish found in its stomach, which was observed during an impromptu necropsy on the carcass.

These two spotted dolphin mortalities likely involved two vessel types that caused different

types of damage. However, both carcasses presented extensive injuries in the lumbar-caudal region that were fatal (Long et al., 1997).

One Event Involving a Blue Whale

On 23 April 2019, the *Rotterdam Express*, a container vessel from Long Beach, California, arrived at the commercial port of Manzanillo, Colima (Figure 1). Upon docking, workers notified port and environmental authorities that a whale was on the vessel's bulb. The carcass was identified as a male blue whale (*Balaenoptera musculus*) in fresh condition; hemorrhage was visible in some body parts (Figure 6).

The Northeast Pacific subpopulation of blue whales migrates each winter–spring to the coasts of the Baja California Peninsula, the Gulf of California, and the Costa Rican Dome for breeding activities (Gendron, 2002). Given that sightings of this species have not been documented in the MCP coastal region, it is presumed that its transit to the Costa Rican Dome must occur through oceanic zones. Trajectories of large cargo vessels also use oceanic regions where the blue whale was presumably encountered (“wrapped” on the bow). Examination of one baleen plate allowed assessment of its isotopic ratio that suggested that this whale came from the Dome (Blevins et al., 2022); thus, its vessel interaction likely occurred during its northward migration.

This blue whale subpopulation has shown recovery from the commercial overexploitation of the last century (Calambokidis & Barlow, 2004); however, this species may be vulnerable to anthropogenic stressors seasonally due to its migratory patterns. Collisions with vessels have historically affected blue whales in Californian (Redfern et al., 2013) and Mexican (Ransome et al., 2021)



Figure 6. (A) Blue whale (*Balaenoptera musculus*) individual struck and hooked on the bulb (see red circle) of the container vessel *Rotterdam Express*, which arrived on 23 April 2019 at the port of Manzanillo, Colima; and (B) hemorrhages in some parts of the body, mainly in the mid-section, were present where an apparent fracture due to the impact was also observed (red circles). (Photos taken by Luis M. Bautista-Moreno, Secretaría de Marina [SEMAR])

waters. Vessel collision is currently considered the main cause of death for blue whales on the United States' west coast due to high maritime traffic between the ports of Long Beach/Los Angeles and San Francisco (Monnahan & Branch, 2015; Carretta et al., 2016; Hazen et al., 2016).

One Event Involving Bryde's Whale

On 24 October 2021, the carcass of a Bryde's whale (*Balaenoptera edeni*) was reported under the tourist dock of Manzanillo, Colima (Figures 1 & 7). This species was identified through morphological characteristics (e.g., small pectoral fins, absence of fluke coloration, and presence of three longitudinal ridges on the head). Although the carcass showed advanced decomposition, there were areas of trauma on the head, the peduncle (next to the dorsal fin), and the ventral region. All wounds could be linked to a likely vessel strike or possibly to the pressure exerted between the sea and a vessel's bulb that might have transported the carcass into Manzanillo Port.

Like blue whales, this species is usually distributed in oceanic environments of the Mexican Pacific (Villegas-Zurita et al., 2016), and it is unlikely that it was struck or hooked by a vessel in the local area. Also because of its oceanic distribution, this species is one of the least studied baleen

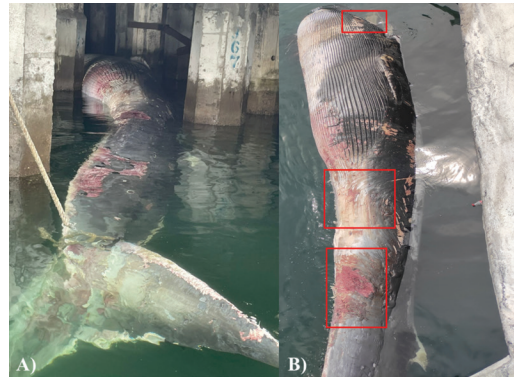


Figure 7. (A) Bryde's whale (*Balaenoptera edeni*) carcass trapped in the pillars of the dock in Manzanillo, Colima, on 24 October 2021, with injuries potentially caused by a collision with a vessel; and (B) possible vessel impact wounds on the peduncle, the side of the dorsal fin, and the ventral part of the abdominal area indicated by red boxes. (Photos taken by Javier Martínez-Rivera, Procuraduría Federal de Protección al Ambiente [PROFEPA-Colima])

whales; it is protected by national (NOM-059-SEMARNAT-2010) and international (International Union for Conservation of Nature [IUCN], 2020) laws.

Ship strikes involving Bryde's whales are rare, assumed so because of their fast swimming and smaller size compared to other more frequently affected baleen species (Félix & Van Waerebeek, 2005). Despite this, there are three reports of interactions between Bryde's whales and vessels in the Pacific Ocean. An example of one is a whale stuck on the bow of a boat in Ecuador. The animal was removed ventrally, still fresh, showing diffuse bruises, suggesting the animal was alive at collision (Félix, 2009; Ransome et al., 2021). This is the first observation of a Bryde's whale likely struck by a vessel in the Mexican Pacific.

Herein, we report on the only six cetacean mortality events related to ship strikes observed in the MCP during 12 years of monitoring. Our count might be an underestimate as similar events could be masked by (1) the inability to observe lesions in specimens with advanced stages of decomposition, (2) the lack of systematic necropsies by specialists, and (3) events in which struck animals sink and do not beach strand (Alzueta et al., 2001; Laist et al., 2001; Van Waerebeek et al., 2007; Silber et al., 2012). The high maritime traffic in the MCP undoubtedly represents a threat to cetaceans that use the region for ecological purposes. Traffic will likely increase in the coming years with the expansion of the port area towards Basin II of the Cuyutlán lagoon (Administración Portuaria Integral [API], 2019). This expansion will allow for the arrival of more

offshore vessels, which could increase the number of cetaceans affected.

Currently, there are no mitigation measures in place for this region. Mitigation measures for this problem are difficult to establish due to the complexity of all contributing factors. Nonetheless, certain ship restrictions such as the following could reduce negative cetacean encounters: (1) reduced speed, (2) traffic separation devices, (3) restricted navigation areas, (4) a mandatory vessel notification system, and (5) establishment of natural protected areas (without navigation) (Silber et al., 2012; Guzmán et al., 2013). In this regard, monitoring should be increased in areas of potential interaction between ships and cetaceans, mainly to gather enough information to carry out a local or regional mitigation plan prepared by all the institutions involved to reduce the probability of collisions.

Acknowledgments

We thank the Facultad de Ciencias Marinas and Centro Universitario de Investigaciones Oceanológicas (U de C) for their logistical support. The Secretaría de Medio Ambiente y Recursos Naturales via the Dirección General de Vida Silvestre México provided the field sampling permits. We thank the staff of the Procuraduría Federal de Protección al Ambiente (PROFEPA) and the Secretaría de Marina as well as the volunteers and students of the Grupo Universitario de Investigación de Mamíferos Marinos (GUIMM) of the U de C for their assistance during strandings. Special thanks to the Director of Environment of the Municipal Council of Manzanillo, Ezequiel Alejandro Reyes Herrera, and his staff, for the logistical support during the last strandings.

Literature Cited

- ACCOBAMS. (n.d.). *Guidelines*. ACCOBAMS. www.accobams.org/guidelines
- Administración Portuaria Integral (API). (2019). *Se ampliará el puerto de Manzanillo en la Laguna de Cuyutlán* [Manzanillo will be expanded in the Cuyutlán lagoon]. <https://puertomanzanillo.com.mx/esps/2111567/se-ampliara-el-puerto-de-manzanillo-en-la-laguna.html>
- Alzueta, J. C., Flórez-González, L., & Fernández, P. F. (2001). Mortality and anthropogenic harassment of humpback whales along the Pacific coast of Colombia. *Memoirs of the Queensland Museum*, 47(2), 547-553.
- Arroyo-Salazar, S. A. (2017). *Pesca ribereña: Potencial agente de disturbio para la ballena jorobada (Megaptera novaeangliae) en la costa del Pacífico Central Mexicano* [Artisanal fishing: Potential agent of disturbance for humpback whales (*Megaptera novaeangliae*) in the coast of the Mexican Central Pacific] (Tesis de Licenciatura). Universidad de Colima, Colima, México.
- Baker, C. S., Steel, D., Calambokidis, J., Falcone, E., González-Peral, U., Barlow, J., Burdin, A. M., Clapham, P. J., Ford, J. K. B., Gabriele, C. M., Mattila, D., Rojas-Bracho, L., Straley, J. M., Taylor, B. L., Urbán, J., Wade, P. R., Weller, D., Witteveen, B. H., & Yamaguchi, M. (2013). Strong maternal fidelity and natal philopatry shape genetic structure in North Pacific humpback whales. *Marine Ecology Progress Series*, 494, 291-306. <https://doi.org/10.3354/meps10508>
- Bettridge, S. O. M., Baker, C. S., Barlow, J., Clapham, P., Ford, M. J., Gouveia, D., & Wade, P. R. (2015). Status review of the humpback whale (*Megaptera novaeangliae*) under the Endangered Species Act (NOAA Technical Memorandum NMFS-SWFSC-540). U.S. Department of Commerce, National Oceanic and Atmospheric Administration.
- Blevins, C., Busquets-Vass, G., Pardo, M. A., Gendron, D., Jacobsen, J. K., Gómez-Díaz, F., Pérez-Puig, H., Ortega-Ortiz, C. D., Heckel, G., Urbán-Ramírez, J., Vilorio-Gómora, L., & Newsome, S. D. (2022). Sex- and age-specific migratory strategies of blue whales in the northeast Pacific Ocean. *Frontiers of Marine Science*, 9, 944918. <https://doi.org/10.3389/fmars.2022.944918>
- Cabral-Solís, E. G. (2011). *Efectos antropogénicos sobre la calidad del agua, diversidad y abundancia de la fauna neotónica de la laguna de Cuyutlán, Colima, México: Recomendaciones para su manejo* [Anthropogenic effects on water quality, diversity and abundance of the nektonic fauna of the Cuyutlán lagoon, Colima, México: Recommendations for its management] (Tesis de Doctorado). Centro de Investigación Científica y de Educación Superior de Ensenada, Baja California, México.
- Calambokidis, J., & Barlow, J. (2004). Abundance of blue and humpback whales in the eastern North Pacific estimated by capture-recapture and line-transect methods. *Marine Mammal Science*, 20, 63-85. <https://doi.org/10.1111/j.1748-7692.2004.tb01141.x>
- Carretta, J. V., Muto, M. M., Wilkin, S., Greenman, J., Wilkinson, K., DeAngelis, M., Viezbicke, J., & Jannot, J. (2016). *Sources of human-related injury and mortality for U.S. Pacific West coast marine mammal stock assessments, 2010-2014* (NOAA Technical Memorandum NMFS-SWFSC-554). U.S. Department of Commerce, National Oceanic and Atmospheric Administration.
- Díaz-Torres, E. R., Marín-Enríquez, E., Corgos, A., Olivos-Ortiz, A., & Ortega-Ortiz, C. D. (2022). Influence of environmental variability on the distribution and abundance of the pantropical spotted dolphin (*Stenella attenuata*) in the Mexican Central Pacific. *Ciencias Marinas*, 48, 3215. <https://doi.org/10.7773/cm.y2022.3215>
- Félix, F. (2009). *A new case of ship strike with a Bryde's whale in Ecuador (SC/61BC5)*. International Whaling Commission. https://iwc.int/document_1776
- Félix, F., & Van Waerebeek, K. (2005). Whale mortality from ship strikes in Ecuador and West Africa. *Latin American Journal of Aquatic Mammals*, 4(1), 55-60. <https://doi.org/10.5597/lajam00070>

- Gendron, D. (2002). *Ecología poblacional de la ballena azul, Balaenoptera musculus, de la península de Baja California* [Population ecology of the blue whale, *Balaenoptera musculus*, in the Baja California peninsula] (Tesis de Doctorado). Centro de Investigación Científica y de Educación Superior de Ensenada, Baja California, México.
- Glass, A. H., Cole, T. V. N., & Garron, M. (2009). *Mortality and serious injury determinations for baleen whale stocks along the United States eastern seaboard and adjacent Canadian Maritimes, 2003-2007* (Northeast Fisheries Science Center Reference Document 09-04). Northeast Fisheries Science Center, National Oceanic and Atmospheric Administration.
- Glockner, D. A., & Venus, S. C. (1983). Individual identification, growth rate, and behavior of humpback whale, *Megaptera novaeangliae*, cows and calves in the waters off Maui, Hawaii, 1977-1979. In R. Payne (Ed.), *Communication and behavior of whales* (1st ed., pp. 223-258). Westview Press.
- Guzmán, H. M., Gómez, C. G., Guevara, C. A., & Kleivane, L. (2013). Potential vessel collisions with Southern Hemisphere humpback whales wintering off Pacific Panama. *Marine Mammal Science*, 29(4), 629-642. <https://doi.org/10.1111/j.1748-7692.2012.00605.x>
- Halliday, W. D., Dawson, J., Yurkowski, D. J., Doniol-Valcroze, T., Ferguson, S. H., Gjerdrum, C., Hussey, N. E., Kochanowicz, Z., Mallory, M. L., Marcoux, M., Watt, C. A., & Wong, S. N. P. (2022). Vessel risks to marine wildlife in the Tallurutiup Imanga National Marine Conservation Area and the eastern entrance to the Northwest Passage. *Environmental Science & Policy*, 127, 181-195. <https://doi.org/10.1016/j.envsci.2021.10.026>
- Hazen, E. L., Palacios, D. M., Forney, K. A., Howell, E. A., Becker, E., Hoover, A. L., & Bailey, H. (2016). *WhaleWatch*: A dynamic management tool for predicting blue whale density in the California Current. *Journal of Applied Ecology*, 54(5), 1415-1428. <https://doi.org/10.1111/1365-2664.12820>
- International Union for Conservation of Nature (IUCN). (2020). *2020 IUCN red list of threatened species*. www.iucnredlist.org
- Jensen, A. S., Silber, G. K., Calambokidis, J., Campbell, C., Cordaro, J., Deiter, R., Ewald, C., Akamine, M., Flannagan, D., Ford, J., Gerrior, P., Green, J., Gulland, F., Gutierrez, D., Henshaw, M., Heyning, J. E., Lawlor, T. E., Lewis, T. D., Litz, J., McClellan, W., . . . Woodhouse, C. D. (2004). *Large whale ship strike database* (NOAA Technical Memorandum NMFS-OPR-25). U.S. Department of Commerce, National Oceanic and Atmospheric Administration.
- Juárez-Ruiz, A. (2014). *Distribución espacio-temporal de mamíferos marinos en las aguas del Pacífico Central Mexicano y sus parámetros oceanográficos en el 2010* [Spatio-temporal distribution of marine mammals in the waters of the Mexican Central Pacific and their oceanographic parameters in 2010] (Tesis de Licenciatura). Universidad de Colima, Colima, México.
- Kono-Martínez, T., Ortega-Ortiz, C. D., Olivos-Ortiz, A., Torres-Orozco, E., & González-Rodríguez, E. (2017). Oceanographic conditions and marine mammals: Identifying a potential relationship in the coastal region of the Mexican Central Pacific. *Revista de Biología Marina y Oceanografía*, 52(3), 479-494. <https://doi.org/10.4067/S0718-19572017000300006>
- Laist, D. W., Knowlton, A. R., Mead, J. G., Collet, A. S., & Podesta, M. (2001). Collisions between ships and whales. *Marine Mammal Science*, 17(1), 35-75. <https://doi.org/10.1111/j.1748-7692.2001.tb00980.x>
- Lammers, M. O., Pack, A. A., Lyman, E. G., & Espiritu, L. (2013). Trends in collisions between vessels and North Pacific humpback whales (*Megaptera novaeangliae*) in Hawaiian waters (1975-2011). *Journal of Cetacean Research and Management*, 13(1), 73-80.
- Llamas-González, M. (2019). *Caracterización acústica de la ballena jorobada (Megaptera novaeangliae) en el Pacífico Central Mexicano* [Acoustic characterization of the humpback whale (*Megaptera novaeangliae*) in the Mexican Central Pacific] (Tesis de Licenciatura). Universidad de Colima, Colima, México.
- Long, J. H., Pabst, D. A., Shepherd, W. R., & McLellan, W. A. (1997). Locomotor design of dolphin vertebral columns: Bending mechanics and morphology of *Delphinus delphis*. *Journal of Experimental Biology*, 200, 65-81. <https://doi.org/10.1242/jeb.200.1.65>
- Meza-Yañez, R. (2022). *Ecología espacial de madres con cría de ballena jorobada (Megaptera novaeangliae) y su relación con anomalías térmicas en el pacífico central mexicano* [Spatial ecology of humpback whale (*Megaptera novaeangliae*) calf mothers and their relationship with thermal anomalies in the Mexican Central Pacific] (Tesis de Licenciatura). Universidad de Colima, Colima, México.
- Monnahan, C. C., & Branch, T. A. (2015). *Sensitivity analyses for the eastern North Pacific blue whale assessment* (Technical Report SC/66a/IA/15). Scientific Committee of the International Whaling Commission.
- Moore, M. J., van der Hoop, J., Barco, S. G., Costidis, A. M., Gulland, F. M., Jepson, P. D., Moore, K. T., Raverty, S., & McLellan, W. A. (2013). Criteria and case definitions for serious injury and death of pinnipeds and cetaceans caused by anthropogenic trauma. *Diseases of Aquatic Organisms*, 103(3), 229-264. <https://doi.org/10.3354/dao02566>
- Ortega-Ortiz, C. D., Díaz-Torres, E. R., Juárez-Ruiz, A. E., & Hernández-Dueñas, M. J. (2013). Cetáceos de la costa de Jalisco, Colima y Michoacán [Cetaceans off the coast of Jalisco, Colima and Michoacán]. In E. Godínez-Domínguez & C. Franco-Gordo (Eds.), *Inventario de biodiversidad de la costa sur de Jalisco y Colima* [Biodiversity inventory of the southern coast of Jalisco and Colima] (2nd ed., pp. 133-143). Universidad de Guadalajara.
- Ortega-Ortiz, C. D., Cuevas-Soltero, A. B., García-Valencia, R. X., Frisch-Jordán, A., Audley, K., Olivos-Ortiz, A., & Liñán-Cabello, M. A. (2022). Spatial ecology of humpback whales (*Megaptera novaeangliae*, Cetacea-

- Balaenopteridae) from the Mexican Central Pacific. *Pacific Science*, 76(2), 95-110. <https://doi.org/10.2984/76.2.1>
- Panigada, S., Pesante, G., Zanardelli, M., Capoulade, F., Gannier, A., & Weinrich, M. T. (2006). Mediterranean fin whales at risk from fatal ship strikes. *Marine Pollution Bulletin*, 52(10), 1287-1298. <https://doi.org/10.1016/j.marpolbul.2006.03.014>
- Punt, A. E., & Wade, P. R. (2012). Population status of the eastern North Pacific stock of gray whales in 2009. *Journal of Cetacean Research and Management*, 12, 15-28.
- Ransome, N., Loneragan, N. R., Medrano-González, L., Félix, F., & Smith, J. N. (2021). Vessel strikes of large whales in the Eastern Tropical Pacific: A case study of regional underreporting. *Frontiers in Marine Science*, 8, 675245. <https://doi.org/10.3389/fmars.2021.675245>
- Redfern, J. V., McKenna, M. F., Moore, T. J., Calambokidis, J., DeAngelis, M. L., Becker, E. A., Barlow, J., Forney, K. A., Fiedler, P. C., & Chivers, S. J. (2013). Assessing the risk of ships striking large whales in marine spatial planning. *Conservation Biology*, 27(2), 292-302. <https://doi.org/10.1111/cobi.12029>
- Schoeman, R. P., Patterson-Abrolat, C., & Plön, S. (2020). A global review of vessel collisions with marine animals. *Frontiers in Marine Science*, 7, 292. <https://doi.org/10.3389/fmars.2020.00292>
- Secretaría de Comunicaciones y Transportes (SCT). (2014). *Port handbook: Puerto de Manzanillo 2014-2015*. Coordinación General de Puertos y Marina Mercante.
- Secretaría de Marina (SEMAR). (2013). *Laguna de Cuyutlan, Col.* [Flat Map. Scale: 1:10,000]. SEMAR (Secretaría de Marina Armada de México).
- Secretaría de Turismo (SECTUR). (2014). *Estudio de competitividad turística del destino Manzanillo* [Study of tourism competitiveness for Manzanillo]. Agenda de Competitividad de los Destinos Turísticos de México. 405 pp.
- Silber, G. K., Slutsky, J., & Bettridge, S. (2010). Hydrodynamics of a ship/whale collision. *Journal of Experimental Marine Biology and Ecology*, 391(1-2), 10-19. <https://doi.org/10.1016/j.jembe.2010.05.013>
- Silber, G. K., Vanderlaan, A. S., Arceredillo, A. T., Johnson, L., Taggart, C. T., Brown, M. W., Bettridge, S., & Sagarminaga, R. (2012). The role of the International Maritime Organization in reducing vessel threat to whales: Process, options, action and effectiveness. *Marine Policy*, 36(6), 1221-1233. <https://doi.org/10.1016/j.marpol.2012.03.008>
- Thomas, P. O., Reeves, R. R., & Brownell, R. L., Jr. (2016). Status of the world's baleen whales. *Marine Mammal Science*, 32(2), 682-734. <https://doi.org/10.1111/mms.12281>
- Urbán R., J., & Vilorio-Gómora, L. (2021). Challenges of whale watching and swim with dolphins in Mexico. *Frontiers in Marine Science*, 8, 624596. <https://doi.org/10.3389/fmars.2021.624596>
- Valencia-González, S. B. (2014). *Interacción entre las ballenas jorobadas (Megaptera novaeangliae) y el tránsito marítimo en la costa de Colima y sur de Jalisco*. [Interaction between humpback whales (*Megaptera novaeangliae*) and maritime traffic in the coast of Colima and south of Jalisco] (Tesis de Licenciatura). Universidad de Colima, Colima, México.
- Van Waerebeek, K., Baker, A. N., Félix, F., Gedamke, J., Iñiguez, M., Sanino, G. P., & Wang, Y. (2007). Vessel collisions with small cetaceans worldwide and with large whales in the Southern Hemisphere, an initial assessment. *Latin American Journal of Aquatic Mammals*, 6(1), 43-69. <https://doi.org/10.5597/lajam00109>
- Villegas-Zurita, F., Castillejos-Moguel, F., Cabrera-Núñez, S., & Ramírez-Barragán, R. F. (2016). First records of *Balaenoptera edeni* (Cetartiodactyla: Balaenopteridae) in the coast of Oaxaca, Mexico. *Therya*, 7(3), 499-503. <https://doi.org/10.12933/therya-16-396>