

Calf-Directed Aggression as a Possible Infanticide Attempt in Pacific White-Sided Dolphins (*Lagenorhynchus obliquidens*)

Leanne R. Rosser,¹ Tadamichi Morisaka,² Yoko Mitani,³ and Takeshi Igarashi¹

¹*Mutsu Bay Dolphin Research, Mutsu, Aomori, Japan
E-mail: leannerachaelrosser@gmail.com*

²*Cetacean Research Centre, Graduate School of Bioresources, Mie University,
1577 Kurimamachiya-cho, Tsu, Mie 514-8507, Japan*

³*Field Science Centre for Northern Biosphere, Hokkaido University,
20-5 Benten-cho, Hakodate, Hokkaido 040-0051, Japan*

*Current address for Yoko Mitani: Wildlife Research Centre, Kyoto University,
2-24 Tanaka-Sekiden-cho, Sakyo, Kyoto 606-8203, Japan*

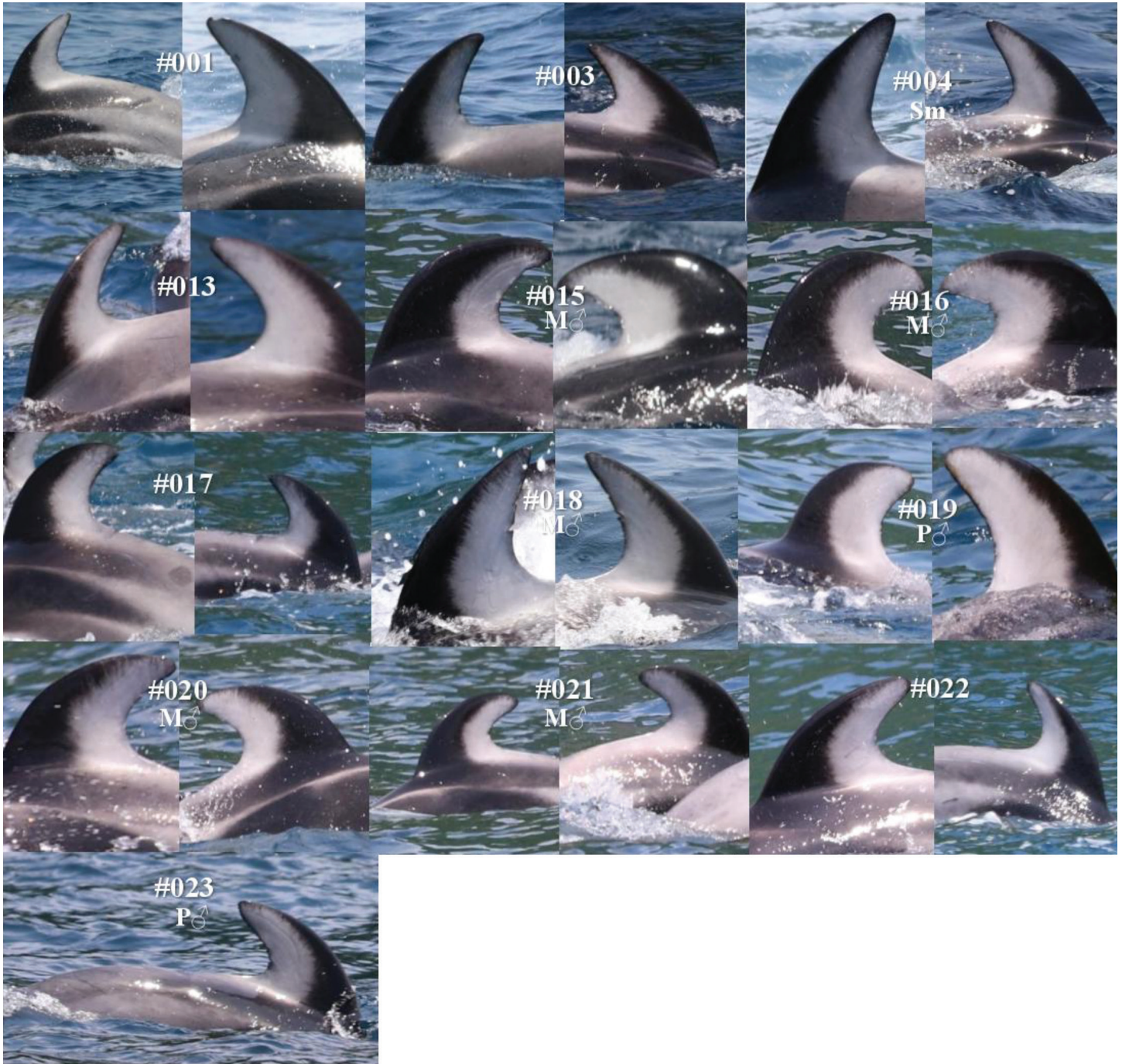
Supplemental Appendices

Supplemental Appendix 1. Photo-identification of all individuals present during the observation. Key: M♂ = male, P♂ = possible male, and Sm = suspected mother.

First Group



Second Group



Supplemental Appendix 2. Table of attack bouts during the observation. Key for behaviour of attacker: sub = submerge, s = sandwiched by two dolphins, r = ram, b = possible bite, and f = flip.

Unknown (due to positioning) = <i>u</i>									
Group ID	Bout #	Time	Attacker	Attacker's behaviour	Others in group featured in bout photo				Note
First Group	1	1201	#003 + #001	r	#008				#008 rams #003
	2	1201	#003	f	<i>u</i>				
	3	1201	<i>u</i>	r	#004				
	4	1202	#001	r, sub	#002	<i>u</i>			<i>u</i> dolphin blocks
	5	1202	#002	r	#005	#001	<i>u</i>		
	6	1202	#001	s	#005				
	7	1202	#002	r, f					
	8	1202	#001	s, f	<i>u</i>	#005			
	9	1203	#002 + #003	r					
	10	1203	#002 + #003	s, sub	#006	#004			
	11	1204	#002 + #003	r, sub					
	12	1204	<i>u</i>	r	#005	#006	#001	#003	#001 rams #006
	13	1204	<i>u</i>	r, sub	<i>u</i>				Neonate jumps and is attacked on landing
	14	1204	#003 + #002	r, s	#004	#001	#005		
	15	1204	<i>u</i>	r, f	#001				
	16	1205	#001	r, sub	#006	#002			
	17	1206	#001+#009	s	<i>u</i>				
	18	1208	<i>u</i>	r	<i>u</i>				Neonate vertical half out the water; too far to ID
	19	1209	<i>u</i>	r, f	#002	#003	<i>u</i>		Too far to ID
	20	1209	<i>u</i>	r, f	<i>u</i>	<i>u</i>			Too far to ID
	21	1209	<i>u</i>	r					
	22	1210	<i>u</i>	r	<i>u</i>				
	23	1210	<i>u</i>	f					
	24	1210	<i>u</i>	r	#001	<i>u</i>	<i>u</i>	<i>u</i>	
	25	1212	<i>u</i>	r	#005	#002	<i>u</i>		
	26	1212	#001	r, f, sub	#004				
	27	1212	#003	r	#001	#002			Attacker underneath pushes neonate against #001's peduncle
	28	1212	<i>u</i>	r	<i>u</i>	<i>u</i>	<i>u</i>	#008	
	29	1212	#009	r, sub	#002	#008	#003		
	30	1212	#001	r	<i>u</i>				
	31	1212	<i>u</i>	r, sub	#006	#005	#002		<i>u</i> belly-up rams using dorsal side
	32	1213	#002	r, f					
	33	1213	<i>u</i>	r	#001	<i>u</i>	#003		Neonate pushed into #001's peduncle
	34	1214	#003	r	#009	#001			Neonate is continuously pushed along
	35	1215	#009	f	#004	#005	#008		#009 gets in between (#005-neonate-#004 sandwich)
	36	1222	#001 + #009	s, sub	#005				
	37	1222	#002	r	#009				
	38	1224	<i>u</i>	f					
	39	1226	#001 + #003	s	#002				
	40	1226	<i>u</i>	r, sub	#002				
	41	1226	<i>u</i>	r, f	#001	#003			
	42	1228	<i>u</i>	r					
	43	1228	#001	r	#005				
	44	1228	<i>u</i>	r, f, sub	#009	#001	#003	<i>u</i>	
	45	1229	#003	r, b	#004	#009			Possible bite
	46	1229	#002 + #003	s, r					
	47	1230	<i>u</i>	r	<i>u</i>				
	48	1230	#002	r, f, sub					
	49	1230	#003	r					
	50	1230	<i>u</i>	f, r	<i>u</i>				
	51	1230	#002	r					
	52	1230	#003 + #001	r					Attack starts with #003 and ends with #001
	53	1232	#002	r	#004				
	54	1234	#002	r					
	55	1235	#001	r, f					
	56	1235	#001	f, sub					
	57	1237	<i>u</i>	sub					
	58	1238	<i>u</i>	sub	#004				Individual dorsal-mounts #004 with neonate at side
	59	1242	#001	r					
	60	1248	<i>u</i>	r	#002	#003			Erection visible; push up neonate using belly
	61	1248	#002	r	#001	#004			
	62	1249	#009	r, sub	#013				
Unknown	63	1250	<i>u</i>	sub	#002	#003			

Calf-Directed Aggression in Pacific White-Sided Dolphins

Unknown (due to positioning) = <i>u</i>									
Group ID	Bout #	Time	Attacker	Attacker's behaviour	Others in group featured in bout photo				Note
Second Group	64	1250	#016	r, f	#013				
	65	1250	#017	r	#020	#022			
	66	1250	#017	r, sub	#013				
	67	1250	#022	r	<i>u</i>	#019			Neonate on individual's back; other dolphin rams attacker
	68	1251	#020	sub	#016	#022	#013	#019	
	69	1251	#019 + #017	s	#013				
	70	1252	<i>u</i>	f	<i>u</i>				
	71	1256	#022 + #018	f, sub					#022 push up using belly and then #018 submerges
	72	1258	<i>u</i>	f	#017	#004			
	73	1258	#016 + #017	f, r	#013	#018	#016		Starts with +#016; ends with +#017
	74	1258	<i>u</i>	f	#019	#022	#018	#021	
	75	1258	#017	r, sub	#004	#021			
	76	1259	<i>u</i>	r, sub	<i>u</i>	<i>u</i>			
	77	1259	<i>u</i>	r, f, sub	#019	#018	#004	#017	
	78	1300	#016	r	<i>u</i>				
	79	1300	#018	f					
	80	1301	#022 + #017	f, s, sub	<i>u</i>				Neonate on individual's back
	81	1301	#018 + #022 + #017	r, sub, ps					Neonate sandwiched bet #022 + #017; attacker jumps on top
	82	1301	#018	r, f	#017				
	83	1301	#018	r, f					
	84	1301	#017	r, f, sub	#018				
	85	1301	#017 + #018	s, f	#013				
	86	1301	#018	r, f	<i>u</i>				
	87	1301	#018	r	<i>u</i>				
	88	1301	<i>u</i>	b	#013				Attacker belly-belly w/neonate
	89	1302	#022 + #018 + #017	r, sub					Violent group hit attack
	90	1302	#017	r, f	#018	#016			
	91	1302	#017	r, sub	#022	<i>u</i>			Neonate vertical
	92	1302	#017 + #019	s, f	#018	#020	#013		
	93	1302	#018	f	#022	#004			
	94	1302	#020	sub	<i>u</i>				
	95	1302	<i>u</i>	r, sub	#018				Violent hit attack
	96	1302	<i>u</i>	r	<i>u</i>	#013	<i>u</i>		Neonate vertical
	97	1302	#019	r					
	98	1303	#020	r	#019				
99	1303	#018	r	#016				#018 pushes up with belly; erection visible	
100	1303	<i>u</i>	sub						
101	1303	<i>u</i>	f						
102	1303	#016	r	#022	#018				
103	1303	#018	f, sub	<i>u</i>				Neonate vertical	
104	1303	#017	r	#018	#022			#018 rams #017	
105	1303	<i>u</i>	f	#015	#017				
106	1304	<i>u</i>	r					Attacker pushes up under baby chin with the side of face	
107	1304	<i>u</i>	r					Attacker belly up	
108	1304	#020	f	#018	#019	#021			
109	1305	#020 + #022 + #017	r, s					#017 finishes attack	
110	1305	#019 + #016	f, s, r	#020					
111	1306	#017	r	#016	#019	#020	#013		
112	1306	<i>u</i>	r	#017	<i>u</i>			Attacker rolls onto belly during attack	
113	1306	#020	r	#004					
114	1308	<i>u</i>	r, f	<i>u</i>	<i>u</i>	<i>u</i>	<i>u</i>	Violent; possibly two in attack group, adult dive jump, baby vertical; three in other subgroup	
115	1308	<i>u</i>	r, sub						